

# PRODUCT INFORMATION PACKET

marathon®  
Motors

Model No: 056B34D5340  
Catalog No: D116  
2,3450,DP,56H,1/60/115/208-230 (USE 5KCR49RN2148T)  
Fan and Blower Motors



Regal and Marathon are trademarks of Regal Rexnord Corporation or one of its affiliated companies.  
©2021 Regal Rexnord Corporation, All Rights Reserved. MC017097E

RegalRexnord

### Nameplate Specifications

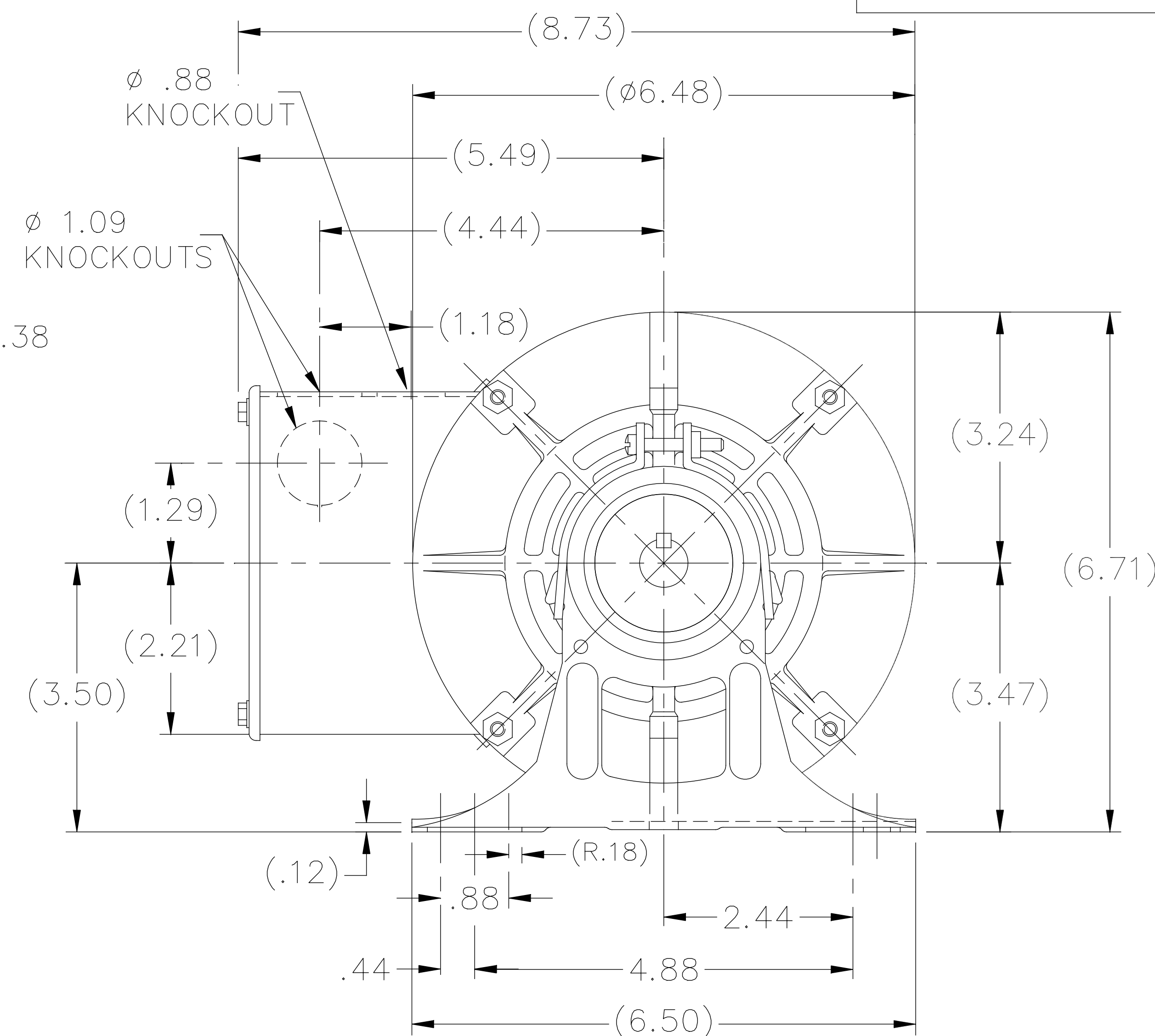
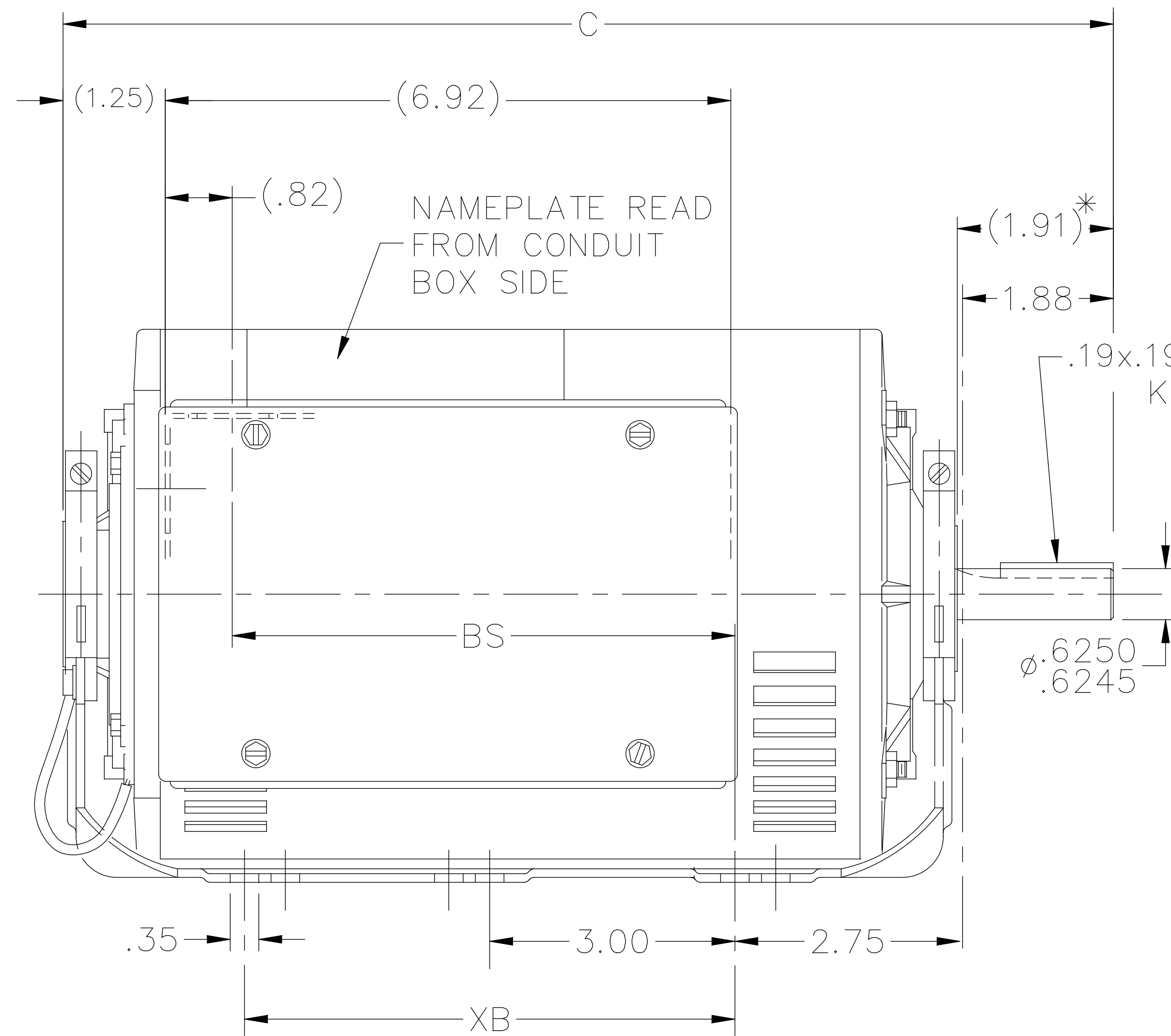
Output HP	<b>2 Hp</b>	Output KW	<b>1.5 kW</b>
Frequency	<b>60 Hz</b>	Voltage	<b>115/208-230 V</b>
Current	<b>18.2/9.8-9.1 A</b>	Speed	<b>3450 rpm</b>
Service Factor	<b>1.2</b>	Phase	<b>1</b>
Efficiency	<b>80 %</b>	Power Factor	<b>87.5</b>
Duty	<b>Continuous</b>	Insulation Class	<b>B</b>
Design Code	<b>L</b>	KVA Code	<b>H</b>
Frame	<b>56</b>	Enclosure	<b>Drip Proof</b>
Thermal Protection	<b>Automatic</b>	Ambient Temperature	<b>40 °C</b>
Drive End Bearing Size	<b>6203</b>	Opp Drive End Bearing Size	<b>6203</b>
UL	<b>Recognized</b>	CSA	<b>Y</b>
CE	<b>Y</b>	IP Code	<b>22</b>
Number of Speeds	<b>1</b>		

### Technical Specifications

Electrical Type	<b>Capacitor Start Capacitor Run</b>	Starting Method	<b>Across The Line</b>
Poles	<b>2</b>	Rotation	<b>Selective Counterclockwise</b>
Resistance Main	<b>0 Ohms</b>	Mounting	<b>Resilient Base</b>
Motor Orientation	<b>Horizontal</b>	Drive End Bearing	<b>Ball</b>
Opp Drive End Bearing	<b>Ball</b>	Frame Material	<b>Rolled Steel</b>
Shaft Type	<b>T</b>	Overall Length	<b>11.85 in</b>
Shaft Diameter	<b>0.625 in</b>	Shaft Extension	<b>1.88 in</b>
Assembly/Box Mounting	<b>F1 Only</b>		
Outline Drawing	<b>A-100517-756</b>	Connection Drawing	<b>102006-52</b>

This is an uncontrolled document once printed or downloaded and is subject to change without notice. Date Created:10/11/2021

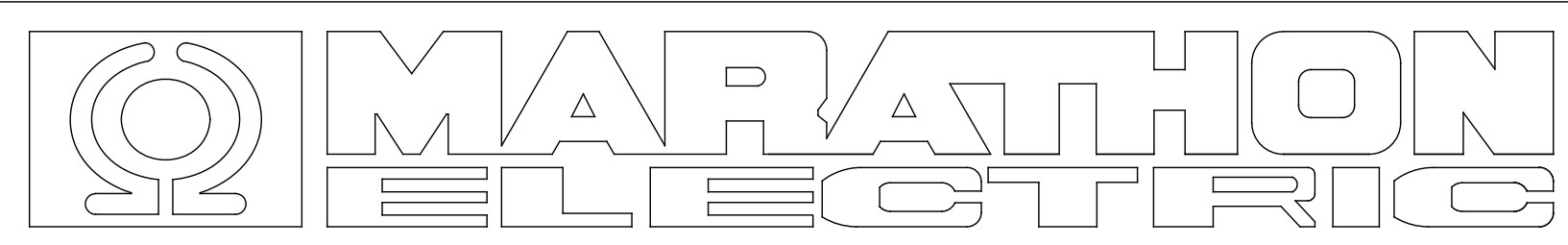
100517



DASH	FR.	C	BS	XB
756	56-75	11.85	5.18	5.00
856	56-85	12.85	6.18	5.00
906	56-90	13.35	6.68	5.00
956	56-95	13.85	7.18	5.00

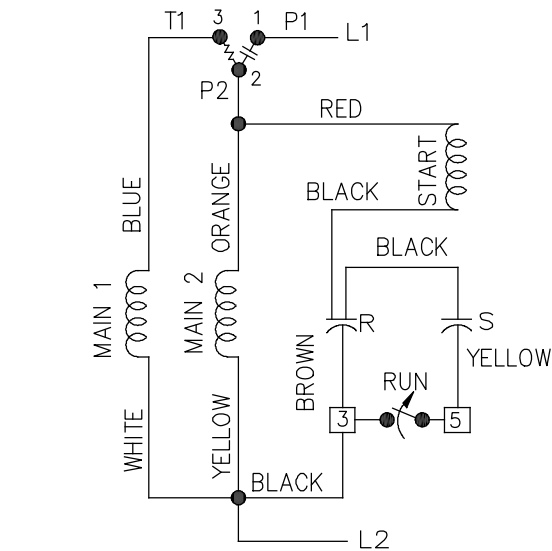
\* DIMENSION IS FROM RESILIENT RING END CAP TO END OF SHAFT

NO.		REVISION		BY & DATE		CHK		ANG		±		FINISH		PREV					
5	NOTE 1 IS REMOVED AS PER ECO-0115505			KK	12/26/16	DEC.	INCHES						DRAWN SMC 08-15-1991						
4	UPDATED DRAWING			RJW	03-28-2007	.X	±.1						CHK ML 08-15-1991						
3	REDRAWN IN AUTOCAD			TAT	09-01-2004	ML	.XX ±.03						APPD GK 08-15-1991						
2	ADDED NOTE CN 24378			PGK	06-09-1997		.XXX ±.005						SCALE 11=32						
1	NEW DRAWING 3804162			SMC	08-15-1991		.XXXX ±.0005						REF						
THIS DRAWING IN DESIGN AND DETAIL IS OUR PROPERTY AND MUST NOT BE USED EXCEPT IN CONNECTION WITH OUR WORK ALL RIGHTS OF DESIGN AND INVENTION ARE RESERVED THIS IS AN ELECTRONICALLY GENERATED DOCUMENT - DO NOT SCALE THIS PRINT												RFP	CAD FILE 100517		SIZE	DRAWING NO.	PAGE	OF	REV.
												DIST	WP	A	100517				5

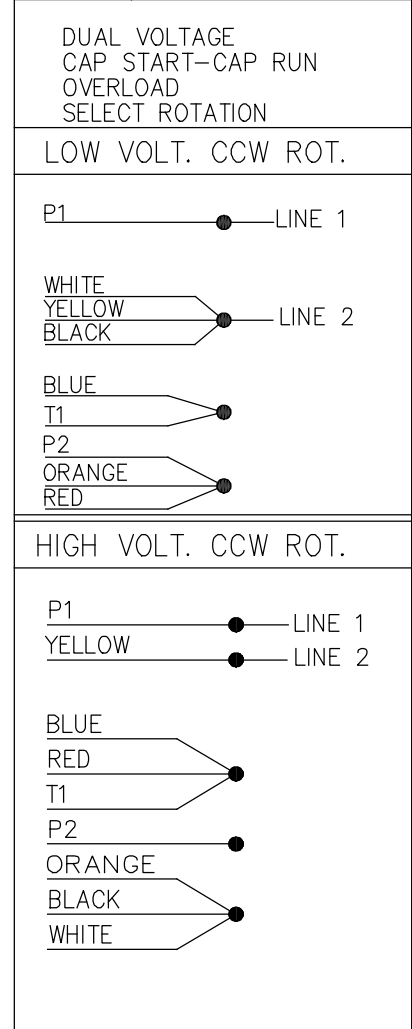
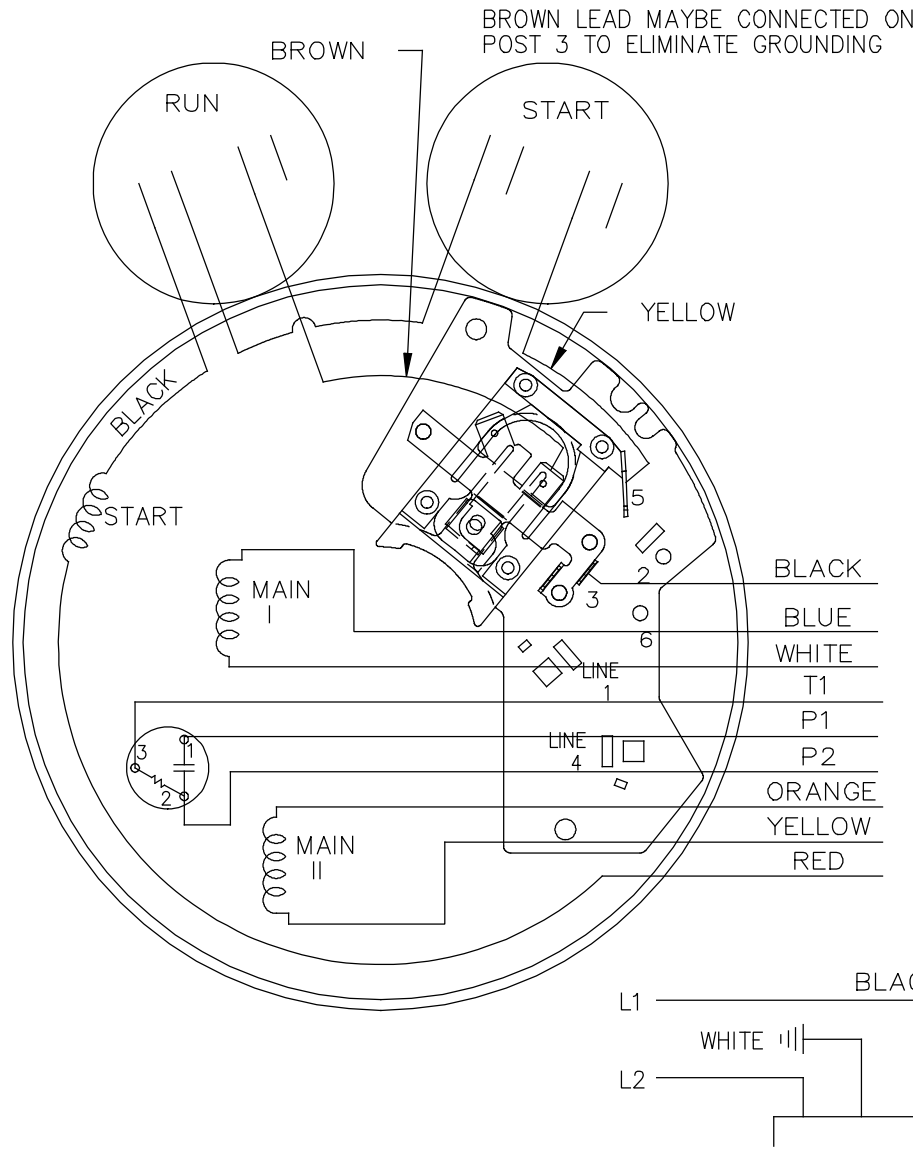
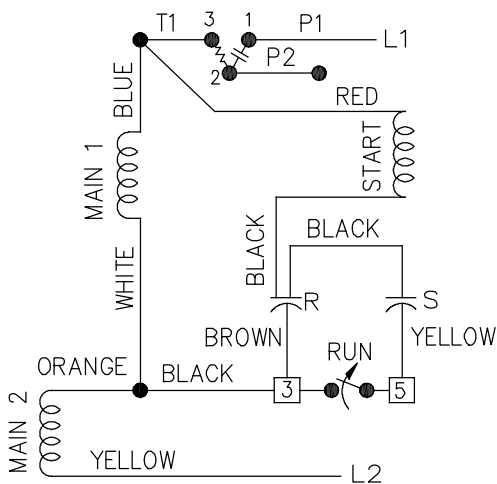


TITLE OUTLINE  
56 FR. - BB - DR.PR. - RESIL. BASE


LOW VOLTAGE C.C.W.



HIGH VOLTAGE C.C.W.



FOR CW ROT. EITHER VOLTAGE INTERCHANGE RED WITH BLACK LEAD.

14	UPDATED LOGO TO REGAL	SN 01-09-2020		TOLERANCES UNLESS SPECIFIED		 <b>Regal Beloit America, Inc.</b>	DRAWN ML 05-09-1992			
13	CHG'ED SWITCH TO OPEN WHEN RUNNING ISAAC 11-2715	KBB 06-23-2011	EH	DEC.	INCHES		CHK GK 05-09-1992			
12	REMOVE 1,2,3 & 4 ON LOW & HIGH VOLT CN 31436	TJB 02-14-2002	DRS	.X	±.1	APPD FG 05-09-1992	SCALE 5=8			
11	REMOVE BRAKE VIEW CN 31436	TJB 01-30-2002	DRS	.XX	±.02	TITLE CONNECTION DIAGRAM	REF			
10	ADDED BROW LEAD DETAIL NOTE CN 24300-323	BJW 02-28-2000		.XXX	±.005		FMF			
9	ADDED CORD VIEW MU20434	BLR 07-01-1998		.XXXX	±.0005	MAT'L.	PREV			
NO.	REVISION	BY & DATE	CHK	ANG	±7'30"	FINISH				
THIS DRAWING IN DESIGN AND DETAIL IS OUR PROPERTY AND MUST NOT BE USED EXCEPT IN CONNECTION WITH OUR WORK ALL RIGHTS OF DESIGN AND INVENTION ARE RESERVED THIS IS AN ELECTRONICALLY GENERATED DOCUMENT - DO NOT SCALE THIS PRINT			RFP	CAD FILE 102006-52			SIZE A	DRAWING NO. 102006-52	PAGE OF 14	REV. 14
			DIST WP							